



**Cairo Marketing Co.**  
Laundry, Cafeteria & Supermarket  
equipment

**Since 1986**

A woman with dark hair tied in a bun, wearing a black long-sleeved shirt and a white apron, is holding a white cloth. She is standing in what appears to be a kitchen or laundry area. The background is slightly blurred, showing some equipment and a doorway.

**COMPANY PROFILE**





In 1990, CMC extended its field. This was after gaining market share of approximately 70% of the sector the dry clean shops. This was due to the trust gained for CMC's highest quality brands with its heavy-duty service compared to its competitors in the market. CMC extended its field by adding another brand for this field, according to the needs of our big customers, which provide hospital laundry equipment that assure clean and sterilized linen.

1990



After then in 2005, CMC established the manufacturing of stainless steel that integrate the projects of laundry, kitchen and cafeteria with all their requirements using materials with highest quality according to the European standard. The scope for this was to manufacture products with highest durability from CMC. From this point, CMC became one of the leading companies in Laundry, Cafeteria, Kitchen and Stainless steel products by providing CMC's highest quality with longest durability for heavy-duty service.

2005



1986

Cairo Marketing Group established at the beginning of 1986. In the sector of supplying laundry equipment for large and small projects including dry clean washers, on premises washing machines and all steam finishing equipment. CMC's scope was finding and providing the best original European and American international brands to save our customers, as we believe that the best quality is the key for the success of both small and large projects in all sectors.



1994

After then in 1994, CMC entered a new field to the market and extended its field by providing more equipment to complete all hospitality equipment for hotels and private sectors with the espresso Italian machines and all cafeteria equipment, 100% original European brands. CMC in the Egyptian market was a forerunner in this field from the beginning.



2016

In 2016, CMC thought about its customers -who are CMC's partner of success- and how to Co-op & help them to save their time and money. CMC established Cairo Maintenance Company to fulfil all needs of CMC's customers. Which in 2017 expanded to reach any needs for any customer.



## About Us

Cairo Marketing Group was established in 1986 seeking top notch European and American brands specialized in Dry Clean Equipment, Industrial Laundry Machines and Steam Ironing Units. In 1990, our customer's trust helped us supply almost %70 of dry clean projects. Accordingly CMC had to expand in order to meet its clientele needs to include laundry equipment for hospitals.

## Vision

Value Engineering is a concept we cherish at CMC and it helps us provide our clients with a high quality service. CMC aims to become the hub for the health and food & Beverages sectors in Egypt.

## Mission

High quality equipment for our customers sustainable profitable projects.







**Alliance<sup>™</sup>**  
Laundry Systems

**Huebsch**  
Alliance Laundry Systems

**Speed Queen<sup>®</sup>**  
Alliance Laundry Systems

**RELIABLE, HIGH CAPACITY**

**LAUNDRY PEACE-OF-MIND**

**RIGHT-SIZE SOLUTION**

**EASY MANAGEMENT**

**LOW TOTAL COST OF OWNERSHIP**

**FAST SERVICE**





100% made in USA



A better place to do your laundry



**Hardmount  
Washer-Extractors**  
(Medium Speed)  
Fixed on concrete base



Model	Unit	SCG030	SCG040	SCG060	SCG080	SCG100
Capacity	Kg	13.6	18	27	36	45
Cylinder Diameter	mm	610	667	762	914	914
Door Opening Size	mm	363	414	414	470	470
Extraction Speed	rpm	542	518	485	626	568
G-Factor		100	100	100	200	165
Dimensions	mm	737x896x1171	778x1073x1227	865x1135x1267	1054x1196x1481	1054x1298x1481

**Softmount  
Washer-Extractors**  
(High Speed)  
Free standing



Model	Unit	SYN070	SYN090	SYN125	SYN180	SYN230	SYN275
Capacity	Kg	28	40	55	80	100	120
Cylinder Diameter	mm	750	914	914	1110	1200	1300
Door Opening Size	mm	460	540	540	530	530	650
Extraction Speed	rpm	915	830	830	750	720	695
G-Factor		350	350	350	350	350	350
Dimensions	mm	1025x1225x1550	1430x1570x2105	1430x1750x2105	1690x1950x2200	1865x2125x2345	2000x2170x2340





100% made in USA



Huebsch Laundry Machines



# Tumbler Dryers



Model	Unit	HG035	HG050	HG075	HG120	HG170	HG200
Capacity	Kg	16	25	34	55	77	90
Cylinder Diameter	mm	762	940	940	1120	1290	1290
Door Opening Size	mm	576	686	686	686	686	686
Airflow (C.F.M)		600(280)	700(330)	800(380)	1400(660)	2150(1110)	2150(1110)
Dimensions	mm	800x1155x1625	980x1190x1960	980x1350x1690	1170x1725x2175	1345x1775x2390	1345x1965x2390



Model	Unit	HCG030	HCG040	HCG060	HSCG080	HSCG100
Capacity	Kg	13.6	18	27	36	45
Cylinder Diameter	mm	610	667	762	914	914
Door Opening Size	mm	363	414	414	470	470
Extraction Speed	rpm	542	518	485	626	568
G-Factor		100	100	100	200	165
Dimensions	mm	737x896x1171	778x1073x1227	865x1135x1267	1054x1196x1481	1054x1298x1481





100% made in Italy



DRY CLEANING MACHINERY, DESIGN AND  
CONSTRUCTION  
Established in 1971



# Dry Cleaning Machines



Model	Unit	F10	F12	F15	F18	F25
Capacity	Kg	10	12	15	18	25
No. of tanks		2 or 3	2 or 3	2 or 3	2 or 3	2 or 3
Cylinder Diameter	cm	70	80	80	90	100
Eco Filter-Filtering surface	m2	2.1	2.1	2.1	3.9	3.9
Eco Filter Volume	Liter	35	35	35	55	55
Deco Filter Volume	Liter	13	13	13	25	25





100% made in Germany

**STAHL**  
WÄSCHEREIMASCHINEN

Your manufacturer for commercial laundry  
systems with German production.





Washer-Extractor

Ws Hard Mount  
(Medium speed)  
Fixed on  
concrete base



Model
Capacity
Cylinder Diameter
Door Opening Size
Extraction Speed
G factor
Dimensions WxDxH

Unit	WS100	WS140	WS220	WS290	WS350	WS450	WS600
Kg	10	14	22	29	35	45	60
mm	600	600	750	750	900	900	900
mm	300	330	460	460	460	460	460
rpm	500	500	500	500	500	500	500
	84	84	134	134	184	184	184
cm	77.5x71.8x122	77.5x101x122	88x107x137	88x124.3x136.2	110x110x158	110x132x158	115x132x158

ATOLL  
Soft Mount  
(High Speed)  
Free standing



Model
Capacity
No of tanks
Cylinder Diameter
Door Opening Size
Extraction Speed
G factor
Dimensions WxDxH

Unit	100	140	220	290	350	450	600	800	1100
Kg	14	19	22	29	35	45	60	80	110
	-	-	-	-	-	-	-	-	-
mm	600	600	750	750	750	900	900	900	1200
mm	330	330	460	460	460	460	460	460	670
rpm	1000	1000	1000	900	900	900	900	800	800
	335	335	419	419	419	430	430	430	453
cm	79x97.5x124	101x103x137	101x103x137	101x121x137	115x120x162	115x138x162	115x168x162	160x200x210	160x220x210

DIVIMAT  
Hygienic  
(High Speed)  
Medical Care



Model
Capacity
No of tanks
Cylinder Diameter
Door Opening Size
Drum Door Size
Extraction Speed
G factor
Dimensions WxDxH

Unit	220	290	350	400	600	800	1200	1600	2000
Kg	22	29	35	45	60	80	120	160	200
	-	-	-	-	-	-	-	-	-
mm	750	750	900	750	900	900	1300	1300	1300
cm	54x54	54x54	54x54	54x54	54x54	54x54	78x58	78x58	78x58
cm	48x42	48x42	48x42	48x42	48x42	48x42	61x46	61x46	61x46
rpm	1000	1000	900	1000	900	900	750	750	750
	419	419	430	419	430	430	430	430	1-9
cm	120x118x168.5	138x118x168.5	156x134.4x171.5	156x118x168.5	156x134.4x171.5	192x134.4x171.5	165x180x200	220x180x200	265x180x200

Tumbler  
Dryers



Model
Capacity
Cylinder Diameter
Door Opening Size
Air Flow

Unit	T323	T234	T236	T244	T246	T252	T254	T256
Kg	11	15	18	28	39	60	80	110
mm	750	750	750	940	940	1300	1300	1300
mm	500	500	500	620	620	900	900	900
Liter/sec	389	389	389	861	1111	1528	1528	1528

Flatwork  
Ironers



Model
Working Width
Roll Diameter
Ironing Speed

Unit	MR400	MR500	MR600	MR800
cm	175 210 270 300	175 210 270 300	175 210 270 300	175 210 270 300
cm	40	50	60	80
meter/min	1.5-6.5	1.5-8	1.5-10	1.5-10

Large Roll  
Diameter



Model
Working Width
Roll Diameter
Ironing Speed

Unit	Master 400	Master 500	Master 600
cm	300 330 350	300 330 350	175 210 270 300
cm	121	161	201
meter/min	3-20	5-35	7-40

Folder & Stacker  
For fast &  
Excellent  
linen finish



Feeder  
To increase  
Ironing  
Performance



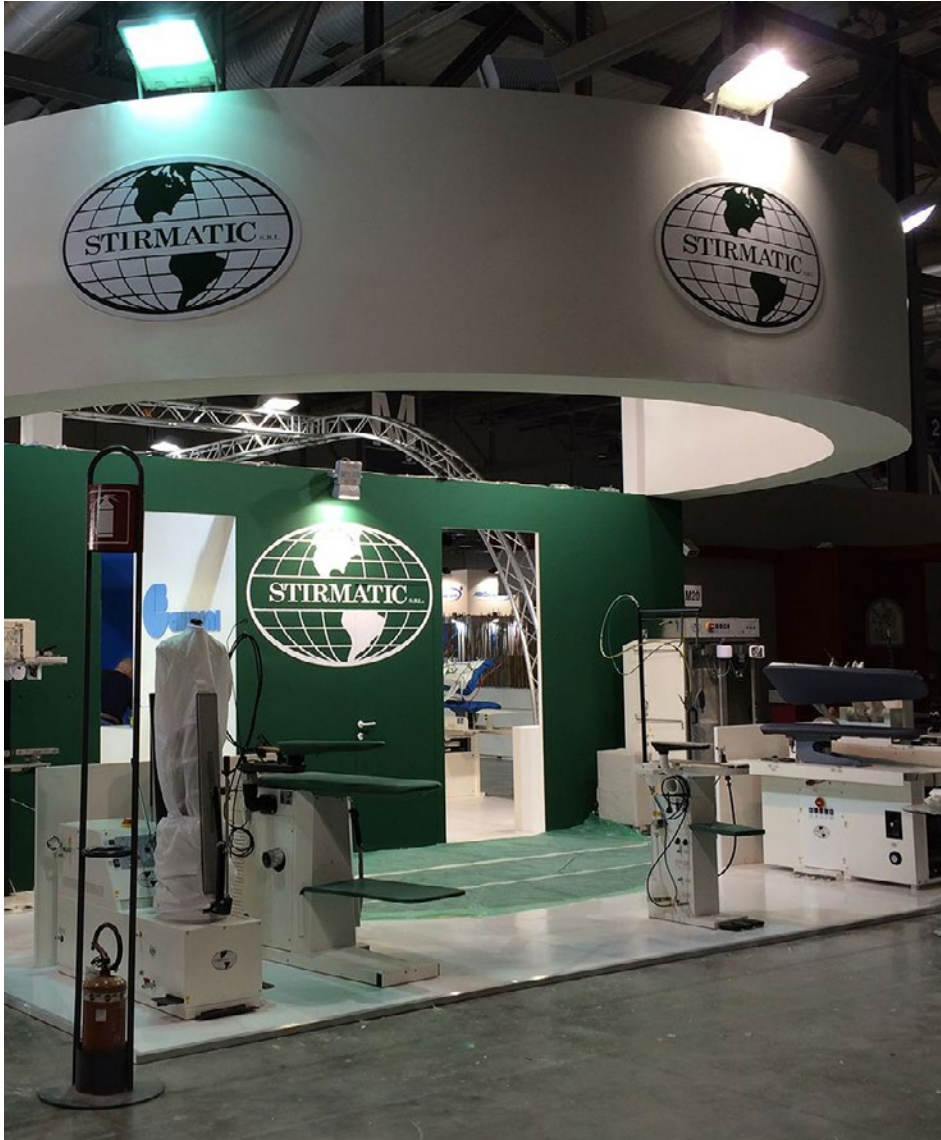




100% made in Italy



Solutions to your ironing style



Ironing Tables



TGAS  
Electro Power: 7kw  
Dimensions: 1550x580x950



TVB/S  
Electro Power: 18kw  
Dimensions: 1680x580x950

Presses



PAU  
Electro Power: 21kw  
Dimensions: 1370x1080x1250



CM316  
Electro Power: 21kw  
Dimensions: 1370x1080x1250

Form Finishers



ME2  
Electro Power: 14kw  
Dimensions: 1360x610x1780

Spotting Table



SC2  
Electro Power: 2.6hp  
Dimensions: 1200x650x1800

Spotting Table



CM500F  
Electro Power: 20kw  
Dimensions: 180x1375x1850





100% made in Italy



The leading European manufacturer of flatwork ironers in the segment of OPL and small/medium industrial laundry.



**STRONG**  
GMP1400ES

**STRONGER**  
e140.25

**THE STRONGEST**  
e140.30

GMP LINE



	Unit	GMP120.25	GMP140.25	GMP160.30	GMP200.30
Model					
Roll Length	Kg	120	140	160	200
Roll Diameter	mm	25	25	30	30
Ironing Speed	mm	3.8	3.8	4.3	4.3
Productivity	kg/h	30	35	50	60
Electro Heating	kw	6.9	7.5	11.4	15
Dimensions	mm	1640x420x1003	1840x420x1003	2090x552x1073	2490x55x1073

G-LINE



	Unit	G15.35	G18.35	G21.50	G26.50	G32.50
Model						
Roll Length	Kg	150	180	210	260	320
Roll Diameter	mm	35	35	50	50	50
Ironing Speed	mm	1.6:5	1.6:5	1.6:8	1.6:8	1.6:8
Productivity	kg/h	43	50	95	115	145
Electro Heating	kw	202.7	24.3	45	57	66
Dimensions	mm	210x550x1110	234x550x1100	2880x750x1290	3580x750x1290	3880x750x1290





100% made in USA



Save on costly pre-printed tag inventories - allows you to set up a coding system to meet your needs.



Tag-O-Manic

Height	mm	559
Width	mm	305
Depth	mm	711
Shipping Weight	kg	22.7

The machine is completely hand-operated. It can print labels up to 6 characters maximum. The labels are used for dry cleaning or wet wash.



Y151  
(Thermo-Seal)

Height	mm	389
Width	mm	556.5
Depth	mm	432.5

- Prints, cuts and seals in one step.
- No solvents required.
- User friendly.

\*Adheres to cottons, poly/cotton blends, loose weave polyester and wools.





**WORLD  
BARISTA  
CHAMPIONSHIP™**

**SIMONELLI** | GROUP

 **nuova  
SIMONELLI®**  
The coffee machines you can trust.

*Victoria Arduino*  
INSPIRED BY YOUR PASSION.







100% made in Italy

 **nuova  
SIMONELLI®**

 **nuova  
SIMONELLI®**

Espresso Coffee Machines

 **WORLD  
BARISTA  
CHAMPIONSHIP™**





MXD on demand



Model  
Bean Hopper Capacity  
Productivity k/h  
Programmed Doses  
Dimensions

MDX on demand
1:2k
9k/h
2
190x360x590

Mythos



Model  
Bean Hopper Capacity  
Productivity k/h  
Programmed Doses  
Dimensions

MDX on demand
3:2k
18k/h
3
188x497x590

Appia Life



Model Body		Unit	Group 1	Group 2	Group 3	XT	
			Semi/ Auto	Semi/ Auto	Semi/ Auto	Semi/ Auto	
Boiler	Capacity	Liter	Stainless Steel with ABS	Stainless Steel with ABS	Stainless Steel with ABS	Stainless Steel with ABS	
			5 liter	11 liter	15 liter	G2 11 liter	G3 15 liter
	Insulations	Standard	Standard	Standard	Standard	Standard	
Steam Wand			1	2	2	2	2
Hot Water Wand			1	1	1	1	1
Heating Power		W	1900	3400	5400	3400	5400
Dimensions		mm	404x545x490	784x544x500	1114x544x500	784x544x500	1114x544x500

\*XT machine also included preacher, sensors, led light and display.

Prontobar  
(Silent)



Model  
Body  
Hourly Production  
  
Recommended Daily Production  
Group Capacity  
Boiler  
  
Number (PAVIRAGE)  
Steam Wand  
Hot Water Wand  
Dimensions

Silent (1 grind)
Stainless Steel with ABS
Up to 140 espresso
100 Cappuccino
10L Hot Water
140cup/day
18gm
2 Boiler
(number capacity: 0.8+0.8L)
6
1
1
250x480x295

Prontobar  
(Touch)



Model  
Body  
Hourly Production  
  
Recommended Daily Production  
Group Capacity  
Boiler  
  
Number (PAVIRAGE)  
Steam Wand  
Hot Water Wand  
Dimensions

Touch (2 grinds)
Stainless Steel with ABS
Up to 140 espresso
100 Cappuccino
10L Hot Water
160cup/day
18gm
2 Boiler
(number capacity: 1.5+1.8L)
20
1
1
250x480x295

Aurelia Wave



Model Body	Unit	Group 2	Group 3
		Semi/Auto/Digit/T3	Semi/Auto/Digit/T3
Boiler Capacity	Liter	Stainless Steel with ABS	Stainless Steel with ABS
		14 liter	17 liter
Steam Wand		2	2
		1 (economizer standard)	1 (economizer standard)
Hot Water Wand		Standard	Standard
		4700(6600 for T3)	5400(8250 for T3)
Automatic Cleaning Program	W		
		802x605x537	1032x605x537
Heating Power	mm		
Dimensions			





100% made in Italy



**WORLD  
BARISTA  
CHAMPIONSHIP™**



**BLACK EAGLE VA 388**



The Speciality Machine

**ADONIS**



The taste of beauty the zest of innovation





100% made in Italy



**I-PRO**  
(I tank technology)



**11 LT Tank**  
2 or 3 tanks  
LED cold lighting

**Frosty Dream**  
(I tank technology)



**12 LT Tank**  
2 or 3 tanks  
LED cold lighting

**Lola**



**6 LT Tank**  
Thermostat: 90C  
Heating Power: 80W

**GT2**  
(I tank technology)



**6 LT Tank**  
1 or 2 tanks  
Soft Ice Cream  
Frozen Yoghurt

**SP2**  
(I tank technology)



**5 LT Tank**  
1.2 or 3 tanks  
Smoothie Drink

**Nina**



**2 LT Tank**  
1 or 2 Tanks  
Creamy Drinks  
Smoothie or Slash Drinks

**Ice Shaker**



**250ml**  
2 different shakers  
with timer

**Karma Soft**



Feeding System: Gravity/Pump  
Cylinder Capacity: 1.5LT  
Tank Capacity: 2.5LT  
Productivity: 150 cones/h

**Roma 218**



Flavors: 2+1 mixed  
Cylinder Capacity: 2x1.95LT  
Tank Capacity: 2x11LT  
Productivity: 650 Cones/h  
Feeding system: Gravity/Pump

**Roma 218**



**3 LT Tank**  
3 Powders  
3 Products  
2 Sizes





100% made in Spain



Automatic juicer machines -  
without touching the peel!



Zumoval juicers are the strongest on the market with heavy duty motors and gears manufactured from stainless steel.



Our equipment is the fastest on the market (up to 200 litres per hour).



More hygienic juicers with our unique self-cleaning shower system and fully isolated juicing area avoiding any ingress of exterior elements (dirt, insects, etc).



Self service On/Off tap available on all models.



Zumoval has additional squeezing kits for small citrus fruits between 40-60mm and 50-70mm.



**Big Basic**  
Pomegranate/  
Grapefruit



Productivity: 120 LT/hr  
25-30 Unit/min  
Motor Power: 3/4 HP  
Basket Capacity: 6kg

**Mini Max + Self**



Self Serve Tap  
Productivity: 60LT/hr  
15-20 Oranges/min  
Motor Power: 3/4 HP  
Basket Capacity: 4kg

**Mini Matic + Self**



Self Serve Tap  
Automatic Feeder  
Productivity: 60LT/hr  
15-20 Org/min  
Motor Power: 3/4 HP  
Feeder Capacity: 6kg

**Fast Top  
With Stand**



Self Serve Tap  
Automatic Feeder  
Productivity: 200LT/hr  
45-50 Oranges/min  
Tank Capacity: 7LT  
Motor Power: 3/4 HP  
Feeder Capacity: 18kg

**Fast Top and  
Cooled Dispenser  
With Stand**



Automatic Feeder  
Productivity: 200LT/hr  
45-50 Oranges/min  
Tank Capacity: 7LT  
Motor Power Horse: 3/4 HP  
Feeder Capacity: 18kg







100% made in USA



Stainless Steel Containers

CB/5E



3.75 HP  
3 Speed + Pluse  
3.75 Lt



Torq 2.0



2 HP  
2 Speed  
2 Lt  
24000 rpm

BB



0.5 HP  
2 Speed  
1 Lt

NuBlend



0.75 HP  
2 Speed + Pulse  
1 Lt

Copolyester Containers

MMB



Great With Frozen Drinks  
3.5 HP  
2 Speed + Pulse+ Timer  
1.4 Lt



Torq 2.0



2 HP  
2 Speed  
1.5 Lt  
24000 rpm



MX



3.5 HP  
2 Speed + Pulse  
2 Lt  
Silencer (Sound Incloser)  
30000 rpm

Drink Mixer



1 HP  
3 Speed + Pulse  
+ Timer  
21000 rpm





100% made in Italy



**Acid 01**  
1600 rpm  
570 Watt  
Dimensions:  
180x280x380mm

**Acid 02**  
1600 rpm  
570 Watt  
Dimensions:  
330x350x430mm



CF1  
Juice Extractors



CF8  
Prof. Juice Extractor



Filter Coffee Contessa  
Coffee Maker



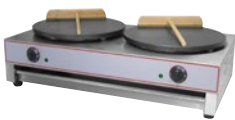
Convection Oven



Pizza Oven  
Two Deck



Pizza Oven  
One Deck



Crepes Maker  
Double



Crepes Maker  
Single



Hot Showcase



Cast Iron Plat  
Ribbed Plate/Flat Plate



Waffle Machine WF1



Waffle Machine WF2





100% made in Italy



# Storage Bins



Model  
Production/Day  
Storage Bin Capacity  
Dimensions LxDxH

Unit	ECP 27	ECP 35	ECP 45	ECP 54	ECP 75	ECP 105	EC 80	EC 130
Kg	29	35	45	54	77	105	80	130
Kg	6	13	13	25	30	45	30	55
mm	375x487x595 +65	440x606x710 +65	440x606x710 +65	520x647x845 +110	650x645x875 +110	930x565x1055 +110	630x655x910 +110	930x565x1050 +110



Model  
Production/Day  
Usable Bin  
Storage Bin Capacity  
Dimensions LxDxH  
Bin Dim. LxDxH

Unit	ESM160	ESM280	ESM510	ESM1000	ECPM300
Kg	160	280	510	1000	300
	BX110	BX200	BX350	BX550	BX350
Kg	100	200	350	550	350
mm	560x569x600	560x569x695	560x569x695	560x569x695	1250x580x848
mm	560x815x1000 +100	870x790x1000 +100	1250x790x1000 +100	1250x790x1100	1250x790x1000 +100



Model  
Production/Day  
Usable Bin  
Storage Bin Capacity  
Dimensions LxDxH  
Bin Dim. LxDxH

Unit	EFM200	EFM500
Kg	200	400
	BX110	BX200
Kg	110	200
mm	770x550x805	770x550x805
mm	560x815x1000 +100	870x790x1000 +100





100% made in Germany

winterhalter



PT Micro Processor  
Control with Touch Screen



Model	PT
Tank Capacity	35 LT
Wash Pump	250 - 300 LT/min
Heating Power	7kw
Dimensions	635x750x1515/1995mm

UCM Micro Processor  
Control With Touch Screen



Model	UCM
Tank Capacity	15.3 LT
Wash Pump	150 - 200 LT/min
Heating Power	7kw
Dimensions	600x715x603mm







100% made in Spain



Horizontal Commercial Freezer + Combi



Supermarket Multi-Deck Display Fridge



Coffee Shop Display Cabinets



Sushi Display Fridge



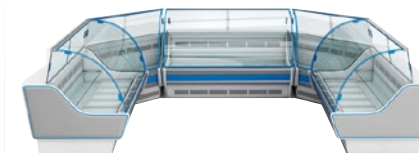
Pastry/Supermarket/Display Cabinets



Multi-Deck Display Unit



Supermarket Display Unit



Refrigeration and Frozen Upright Cabinets







100% made in Egypt



**Cairo Marketing Co**

Laundry , Cafeteria & Supermarket Equipment  
& Stainless steel manufacturing



Pasta Cooker



Double Deck Oven



Electric Stove With Oven



Gas Stove With Oven Storage Area



Boiling Pan



Tilting Pan



Grill With Storage Unit



Deep Fryer With Storage Unit





Pan Bain Marie



Euro Snack Chiller Cabinet With Frozen Department Upright Cabinet



Working Table with Sink



Exhaust Hood



Knee Sink with Faucet



Stainless Salad Bar



Snack Counter Chiller with Sink Undercounter Fridge/Freezer



Shelving Unit



Wet/Dry Linen Trolley



Working Table



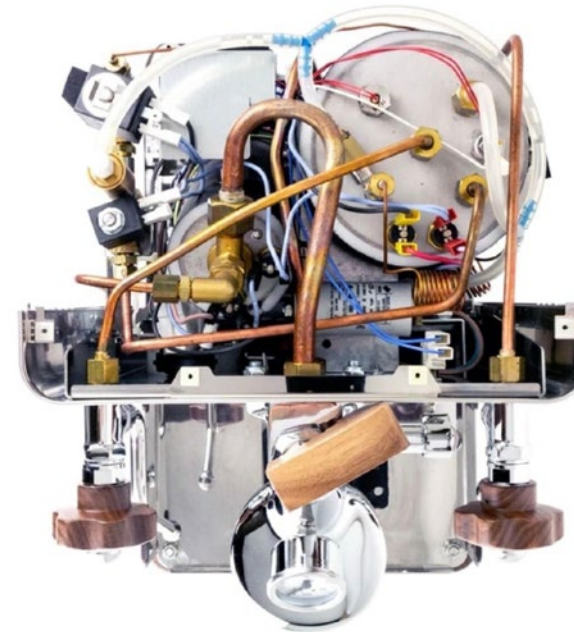




100% made in Egypt



For All Hospitality Equipment



## “Periodical maintenance checkup visits, extends the life of your equipment”

*Equipment are the money maker of your business.*

One of the best ways to keep it operating is to maintain properly. Periodical maintenance not only saves money but also, ensures the efficiency and productivity of the equipment. **Cairo Maintenance Company** is authorized to provide maintenance for Laundry, Cafeteria and commercial kitchen equipment.

**Our technicians had factory trainings from different brands.**

### **Maintenance service**

**Cairo Maintenance Company** is proud to offer the most efficient preventive maintenance programs in Egypt for all hospitality equipment.

Maintenance contract assure less breakdowns which decreases parts change rate, time loss due to breakdown, labor cost to shortage due to breakdown.

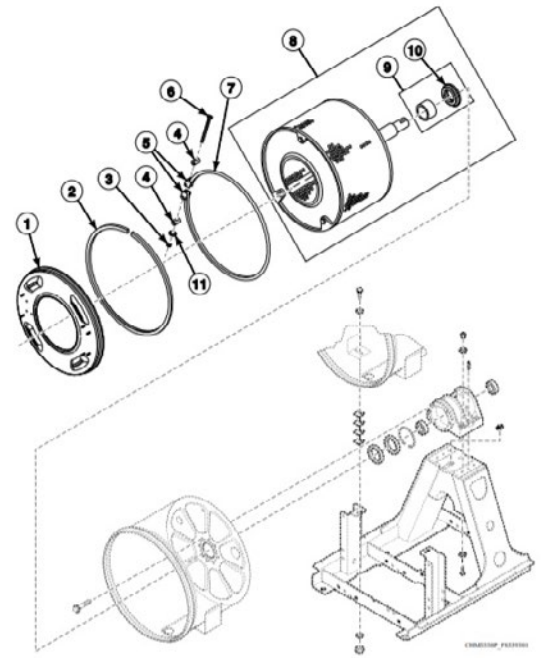
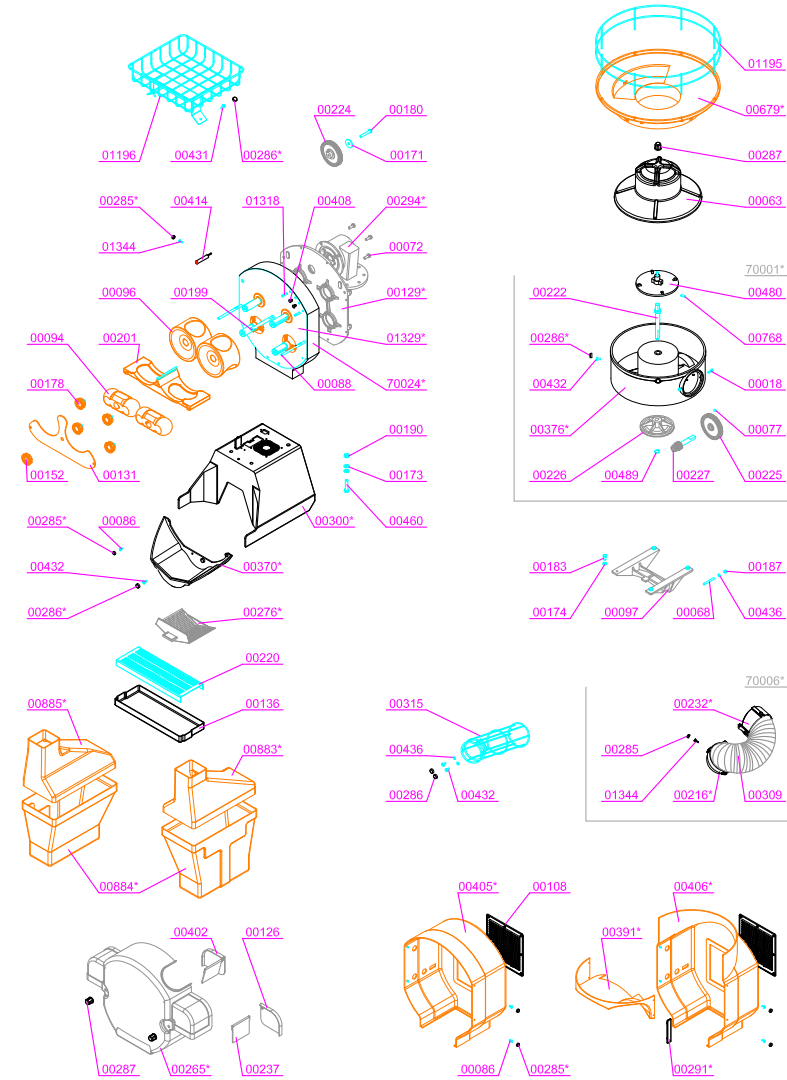
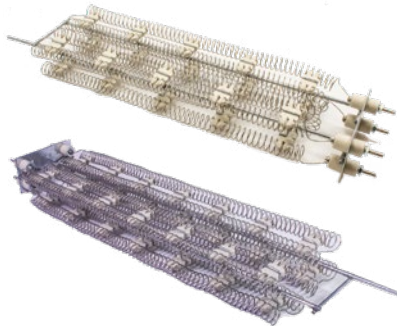
## We Care to Spare

**We Care** by providing periodical checkup visits with a well-trained technical team

**To spare** money, time and labor cost by decreasing the probability of equipment breakdowns.



## A single black V-belt shown against a white background. The belt has a standard trapezoidal cross-section and some faint markings on its surface.







100% made in Italy



- It removes coffee stain from the group, electric valves and water circuit.
- Perfect for all espresso machines service and parts cleaning.
- Directional Pour Flapper Closure.



- Removes all milk protein deposits especially inside the steam wand.
- Perfect for steam wand automatic cappuccino frother and stainless steel pitchers.
- Right dose with built-in dispenser.



- Regenerates the burrs without disassemble.
- No need to change the grinding settings.
- Innovated patented technology.
- Superconcentrated and more active.



- The professional system faster, safe and easy to use for the daily cleaning of:
- steam wand.
  - filter and portafilter.
  - grouphead and backflush valve.



- It removes coffee stain from the group, electric valves and water circuit.
- Suitable for all types of manual and superautomatic espresso machines.
- Available sizes for all types of espresso machines.



- Totally eliminates milk and coffee residues ensuring maximum salubrity.
- Works in the internal circuit of the automatic milk frother
- More cleaning, better results - Right dose with built-in dispenser.
- Tested and certified - Professional use.



- Specific descaler for traditional, capsule, pod, automatic, and semiautomatic espresso machines.
- Safe for use with equipment in contact with food.
- Ultrarapid - Odorless - Tasteless.
- Also active in cold water. Not corrosive for metal.



- Removes scale totally.
- Easy to use, quick, cheap and doesn't affect rubber seals.



## OUR ACHIEVEMENTS







## Head Office

60 Al Khalifa Al Maamoun Street (Queen Center) – Heliopolis – Cairo  
Tel : ( 02 ) 24555305 - 24500645 - 22568656 - 01114555305  
Fax : ( 02 ) 24548654  
P.O.Box : 5904 Heliopolis - West Cairo  
Postal Code : 1171

## Show Room

21 El Sakhawy - Al Khalifa El Maa'moun st. behind Mobil Station

## Sharm El Sheikh Branch

No.3 Morgana Market  
Tel : 01114555305 - ( 02 ) 24555305

## Alexandria Branch

575 Sidi Beshr  
Tel : 01114555305 - ( 02 ) 24555305



cmc@cairo-marketing.com



www.cairo-marketing.com



<https://www.facebook.com/maintenance.cmc>  
<https://www.facebook.com/cmc.cairo.marketing.co>

Hotline: 011114555305  
012758041665  
0224555305



# Cairo Marketing Co

Laundry , Cafeteria & Supermarket Equipment  
& Stainless steel manufacturing



Cairo Maintenance Co  
شركة القاهرة للصيانة

Speed Queen

Huebsch

STAHL  
WÄSCHEREIMASCHINEN

FIRBIMATIC<sup>SPA</sup>



Thermopatch  
Since 1934

SIMONELLI<sup>ITALIA</sup>



zumoval



Beckers

WARING  
COMMERCIAL

Brice

winterhalter

DOCRILUC

ASACHIMICI  
APPLIED FINE CHEMICAL